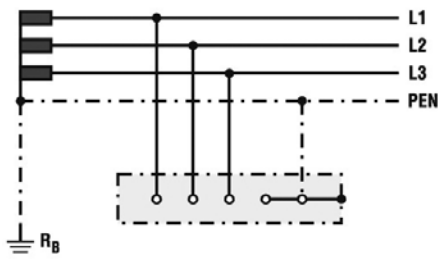
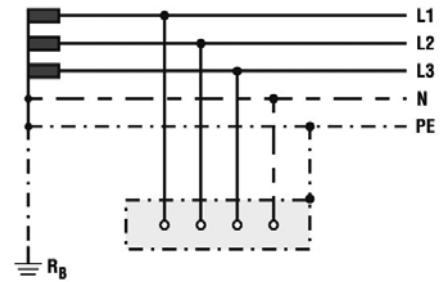


## Surge arresters – ETITEC

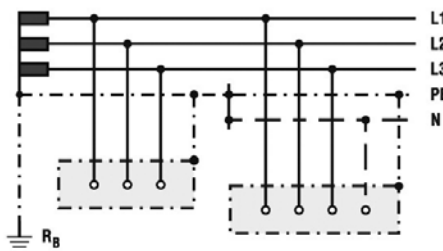
Common power distribution systems (Europe)



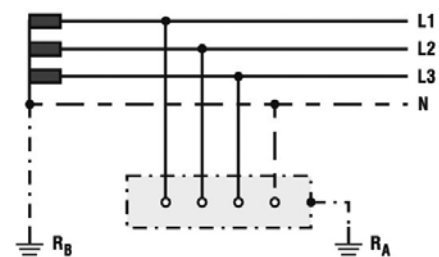
TN-C system



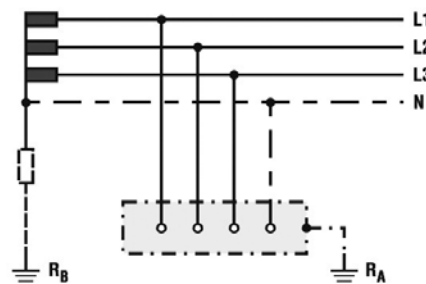
TN-S system



TN-C-S system

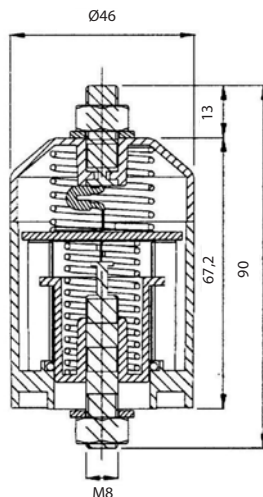


TT system



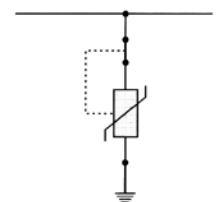
IT system

## Surge arresters group A



### Technical data ETITEC A

Type	275/10; 275/15	440/10; 440/15
In accordance with	IEC-61643-1	
Category IEC / VDE	II / C	
Max. continuous operating voltage (AC/DC) $U_c$	280/350 V	440/580 V
Nominal discharge current (8/20) $I_n$	10 kA; 15 kA	10 kA; 15 kA
Max. discharge current (8/20) $I_{max}$	20 kA; 30 kA	20 kA; 30 kA
Protection level at $I_n$ (8/20)	1,2 kV	2,2 kV
Response time $t_A$	<25 ns	
Thermal decoupler	✓	
Torque	max. 3,5 Nm	
Temperature range	-30°C ... + 80°C	
Mounting	outdoors	
Casing material	nylon P66 V-0	



Circuit diagram